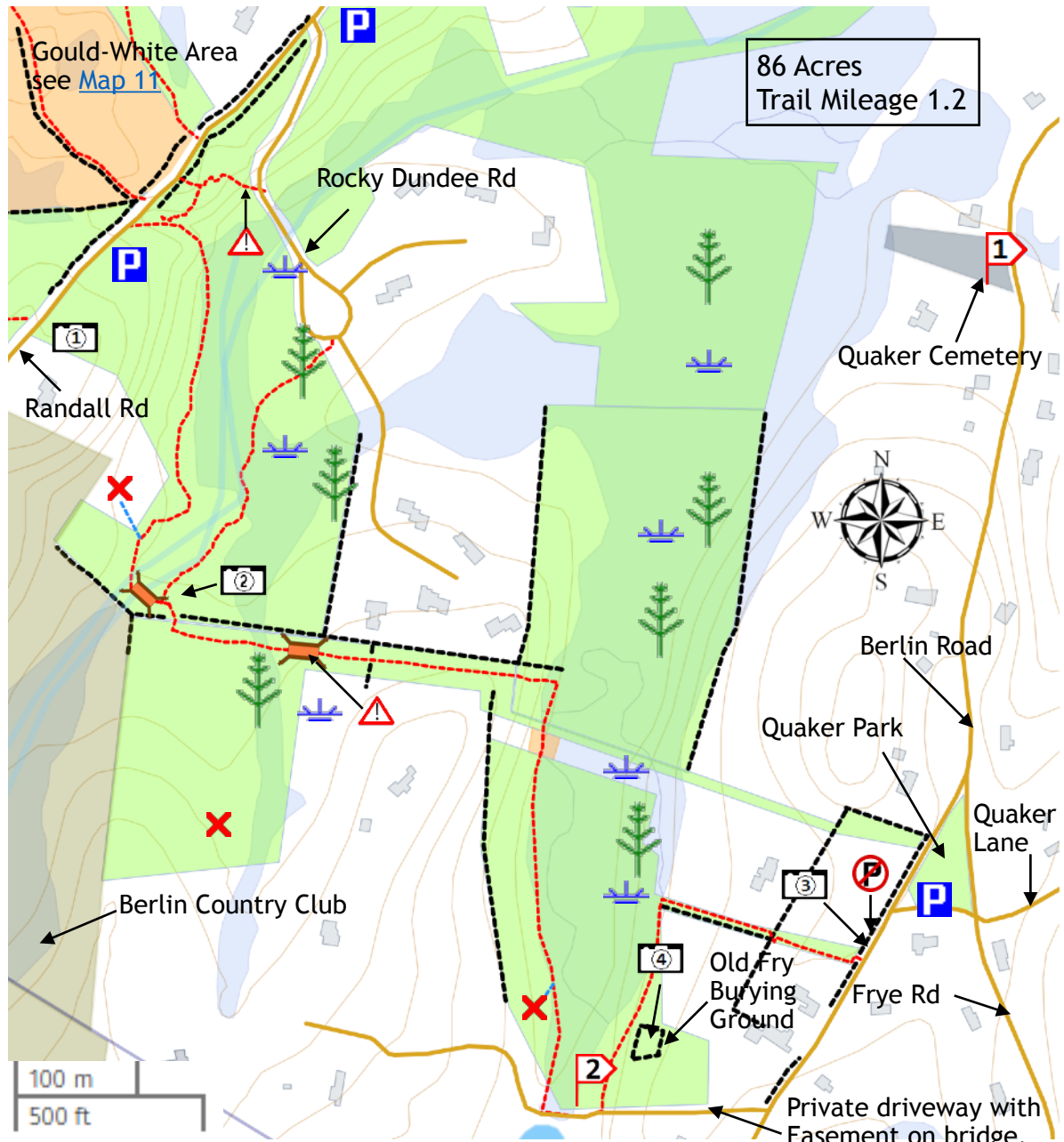


Vinger-Venable and Rocky Dundee | Map 10

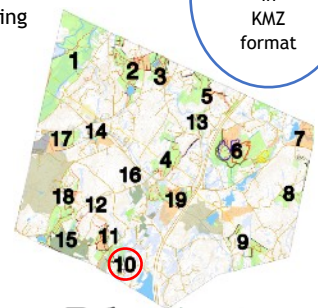


Map made by Bolton Trails Committee with MassMapper data and route locations collected by volunteers © Bolton Conservation Trust 2025

Legend:

- | | | |
|---|------------------------------------|--|
| Private land or easement
Please stay on trail | Primary trail | Contour lines at 20' intervals |
| Town or Conservation Land.
Please obey trail restrictions. | Secondary trail | Parking No Parking |
| Lake or Pond.
Permanent water. | No access | Photo location |
| Swamp, wetlands or area
subject to flooding. | Stone wall | Point of interest
mentioned in the text |
| Recreation Area;
public or private | Marsh or swamp | Bridge |
| | Wooded area | Use Caution |
| | Private Driveway or
Public Road | |

Click for
GPS
in
KMZ
format



Vinger-Venable Conservation Area: This parcel, a gift from Paul Vinger and Ann Venable, in 1990, includes fields, a large meadow, and a historic Quaker Cemetery (the Old Fry Burying Ground) dating from 1770. This area was known as “Fryville.” There were Quakers (aka Friends) in Bolton before the Fry family’s arrival, but the name comes from John and Miriam Fry who moved to Bolton sometime before 1762. The newer burying ground on the west side of Berlin Rd. **1** was given to the Friends in 1844. A meeting house was erected nearby before 1789. It was moved to Old Sturbridge Village in 1954. Descendants of the Fry family were influential in Massachusetts and beyond. Two benches at the Old Fry burying ground were installed as Eagle Scout projects.

Rocky Dundee: This conservation area is Town of Bolton open space as a result of the FOSPRD (Farming and Open Space Residential Development) on Rocky Dundee Rd. Much of this extensive land is swamp and a safe refuge for many forms of wildlife. The trail from Randall Rd. offers a pleasant walk through woodland beside a stream, crossing over a brook on a recently constructed bridge, and following a meandering series of bog bridges over rocks through a wet area.



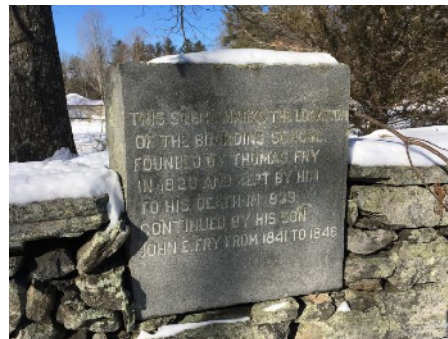
1 Randall Rd. sign.



2 Winter brook crossing.

Parking:

- *Randall Rd. and Rocky Dundee Rd. intersection*, on a grassy shoulder. 4 cars. 42.415111, -71.624306
- *Quaker Park*, on shoulder not blocking the road. 1 car. 42.408889, -71.618306
- *Randall Rd.*, Small area on the east side of 1 car. 42.413278, -71.626694



3 Monument to Fry’s school on Berlin Rd.

Connections: Trails lead to the Gould-White area ([Map 11](#)) where there is an extensive network of paths on varied terrain with vernal pools, a small cave, and connections to Sawyer and West Berlin Roads.

Suggested walks:

Short and easy: Start at Randall Rd. and follow the trail to the Old Fry Burying Ground where there are benches. Take a break then walk back. Look for birds at the pond near the shared driveway. less than a mile. **2**

Longer: Start at Quaker Park, follow the trail via the Old Fry Burying Ground and continue to Randall Rd., then make a loop around the Gould-White ([Map 11](#)) area. Return to Quaker Park the way you came. 2.75 miles.



5 The Old Fry Burying Ground.



Bolton Conservation Land Rules and Regulations.

The Bolton Conservation Commission welcomes responsible public use and enjoyment of land under its stewardship. Pursuant to MGL Chapter 40, Section 8c, the Conservation Commission has adopted these rules and regulations to provide a pleasurable experience for users and in order to preserve and protect in perpetuity the wildlife, ecological, environmental, and conservation values of these properties which include:

- Protection of surface and groundwater resources
- Protection of unfragmented forest habitat
- Protection of wildlife habitat
- Protection of open space and the Town's trails system.

Prohibitions

- Hunting, trapping and discharging of firearms, arrows, paintballs, and pellets
- Motor vehicles, except for emergency response or municipal vehicles
- Dumping and/or littering
- Alcoholic beverages and glass containers
- Smoking
- Swimming except by waders at the Tom Denney Nature Camp

Advance permission needed in writing from the Bolton Conservation Commission for the following:

- Camping
- Fires
- Memorials or Displays
- Building new trails, extensions, and modifications to existing trails
- Cutting, removing, or damaging vegetation, except for the control of invasive species
- Collecting dead or downed wood, rocks or wildlife

Any activities or uses not set forth here require the prior written permission of the Bolton Conservation Commission.

Adopted 12/21/2010

Filed with the Bolton Town Clerk 1/3/2011

Bolton Conservation Commission
663 Main Street, Bolton, MA 01740
978 779 3304
concom@townofbolton.com



Dogs may be walked on conservation land as long as they are under effective control of a person. People walking dogs shall remove feces from trails and all environmentally sensitive areas. Please keep dogs out of vernal pools during breeding season for frogs and salamanders (generally mid-February through April). Do not let dogs chase or harass wildlife.

