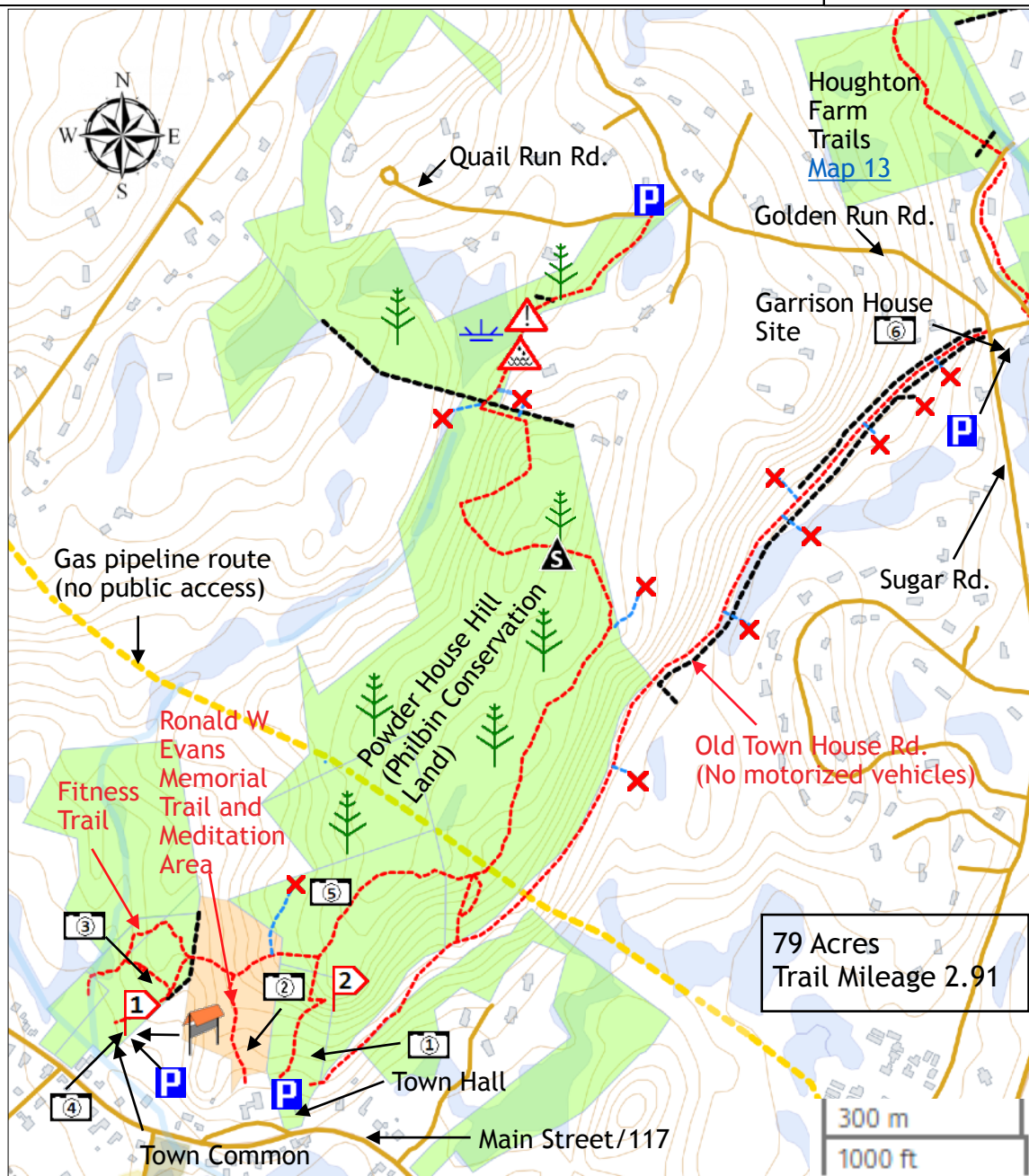


Powder House Hill

Old Town House Rd,
Town Common and Evans areas

Map 4

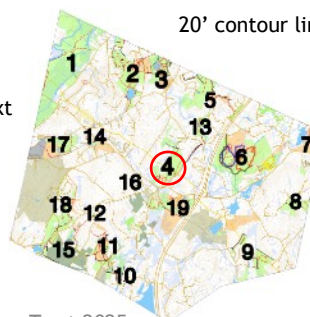


Legend:

- | | | |
|--|----------------------|---|
| Town or Conservation Land. Please obey trail restrictions. | No access | Photo location |
| Lake or Pond. Permanent water. | Stone wall | Point of interest mentioned in the text |
| Swamp, wetlands or area subject to flooding. | Marsh or swamp | Trail susceptible to flooding |
| Primary trail | Wooded area | Use Caution |
| Secondary trail | High Point on trails | Parking |
| Route of Gas Pipeline | Kiosk | |

Map created by Bolton Trails Committee.
Copyright © Bolton Conservation Trust 2025

20' contour line intervals



Click for
GPS
in
KMZ
format



Copyright © Bolton Conservation Trust 2025
BoltonTrails.org BoltonConservationTrust.org
www.townofbolton.com/conservation-commission



Parking:

- *Behind the Town Hall* (663 Main Street). 2 cars. 42.433417, -71.605139
- *The Town Common* (715 Main Street). 42.434139, -71.609722
- *The Garrison House*. 1 car. 42.444417, -71.591806
- *Quail Run Rd.*: 2 cars parked on the shoulder. 42.446083, -71.598139

Powder House ²: Built in 1811. Commonwealth of Massachusetts regulations prohibited towns from storing ammunition and powder at a Meeting House. A sign explains the history.

Old Town House Rd.: Officially laid out in 1764 as a short connection to the north of Bolton, probably used many years before.

First Parish Church: Founded 1741. Since 1931 has brought together different traditions.

Affiliations: Unitarian Universalist Association, American Baptist Churches, and United Church of Christ. The building dates from 1928; the second structure burned in 1926.

Suggested walks:

Several lengths: Start at the Town Hall and ascend to the Powder House by the direct route, return by any of the trails. This is a rewarding area and exploration can involve a long and rolling walk (3+ miles) over the Philbin Land to Quail Run Rd., returning by the Old Town House Rd.

Short and gentle ascent to the Powder House: .5 miles Take the Ronald W. Evans Trail from the Church parking lot. The Meditation Area is a good place to read, watch wildlife, or whatever appeals to you. Return by any of the possible routes; you can stop at the Town Common and you can try the outdoor musical instruments. ¹

Fitness Trail: Ten fitness stations are on the route starting at the Town Common.

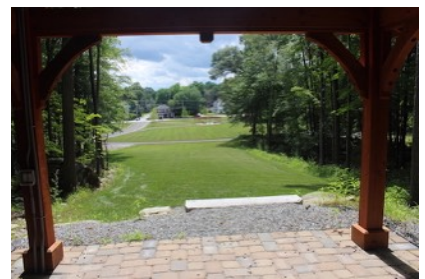
Connections: The Houghton Farm Area ([Map 13](#)) from the end of the Old Town Rd.



1 Powder House



2 Meditation Area



3 Town Common



4 Fitness Trail



5 On Powder House Hill



6 Garrison House



Bolton Conservation Land Rules and Regulations.

The Bolton Conservation Commission welcomes responsible public use and enjoyment of land under its stewardship. Pursuant to MGL Chapter 40, Section 8c, the Conservation Commission has adopted these rules and regulations to provide a pleasurable experience for users and in order to preserve and protect in perpetuity the wildlife, ecological, environmental, and conservation values of these properties which include:

- Protection of surface and groundwater resources
- Protection of unfragmented forest habitat
- Protection of wildlife habitat
- Protection of open space and the Town's trails system.

Prohibitions

- Hunting, trapping and discharging of firearms, arrows, paintballs, and pellets
- Motor vehicles, except for emergency response or municipal vehicles
- Dumping and/or littering
- Alcoholic beverages and glass containers
- Smoking
- Swimming except by waders at the Tom Denney Nature Camp

Advance permission needed in writing from the Bolton Conservation Commission for the following:

- Camping
- Fires
- Memorials or Displays
- Building new trails, extensions, and modifications to existing trails
- Cutting, removing, or damaging vegetation, except for the control of invasive species
- Collecting dead or downed wood, rocks or wildlife

Any activities or uses not set forth here require the prior written permission of the Bolton Conservation Commission.

Adopted 12/21/2010

Filed with the Bolton Town Clerk 1/3/2011

Bolton Conservation Commission
663 Main Street, Bolton, MA 01740
978 779 3304
concom@townofbolton.com



Dogs may be walked on conservation land as long as they are under effective control of a person. People walking dogs shall remove feces from trails and all environmentally sensitive areas. Please keep dogs out of vernal pools during breeding season for frogs and salamanders (generally mid-February through April). Do not let dogs chase or harass wildlife.

