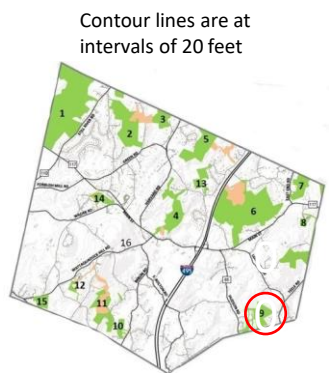


**Legend:** This map is based on OSM data © OpenStreetMap contributors. For more information see [www.openstreetmap.org/copyright](http://www.openstreetmap.org/copyright)

- |   |                 |   |
|---|-----------------|---|
| Private land or easement. Please stay on trail              | Primary trail   | Parking                                 |
| Agricultural Preservation Restriction. Please stay on trail | Secondary trail | Photo location                          |
| Town or Conservation Land. Please obey trail restrictions.  | No access       | Point of interest mentioned in the text |
| Lake or Pond. Permanent water.                              | Stone wall      | Trail susceptible to flooding           |
| Swamp, wetlands or area subject to flooding.                | Marsh or swamp  | Bridge                                  |
| Route of Gas Pipeline                                       | Wooded area     | Kiosk                                   |
|   | Disused railway |   |



**Danforth Brook area:** The area was acquired by the Town in 2000 as part of the nearby residential development. The most popular start point is at the parking area on Danforth Lane. Another start point is via the well hidden break in vegetation next to the circle at the “ T” in the cul-de-sac. Whichever route is taken, some wet areas soon give way to quiet woodland and eventually to a path that follows the route of the Kinder Morgan gas pipeline. Care must be taken at **1** where the brook must be crossed using stepping stones and **2** where the same brook must be crossed by walking along the top of a wall. There are some bog bridges, but occasionally the surrounding ground can be very wet, so good shoes are essential when visiting this path. The two old cars in the woods have been there for many years and have become landmarks. Their location can be used to help find trails off the pipeline easement. Two of these paths lead on to Barratts Hill. The summit of which can be found by taking a side trail. It’s a secluded area and it’s rare to see another walker on this hill.

**Keyes Farm Conservation land:** This property can be easily accessed from Hudson Road/Route 85. It’s a loop with an approach through some woodland. The path crosses the same gas pipeline as the Danforth Brook Trail, but further to the northwest.



Sign on Hudson Rd



Keyes Farm Trail



Danforth Brook stepping stones



Barratt’s Hill Summit plateau



## **Bolton Conservation Land Rules and Regulations**

The Bolton Conservation Commission welcomes responsible public use and enjoyment of land under its stewardship. Pursuant to Massachusetts General Laws chapter 40, section 8c, the Conservations Commission has adopted these rules and regulations to provide to provide a pleasant experience to users and in order to project in perpetuity the wildlife, aesthetic, ecological, environmental and conservation values of these properties, which include:

- Protection of surface and groundwater resources
- Protection of unfragmented forest habitat.
- Protection of wildlife habitat
- Protection of open space and the trails system

Dogs may be walked on conservation land as long as they are under the effective control of a person. People walking dogs shall remove feces from trails and all environmentally sensitive areas. Please keep dogs out of vernal pools during the breeding season for frogs and salamanders (generally mid-February through April). Do not let dogs chase or harass wildlife.

### **Prohibitions**

- Hunting, trapping and discharging of firearms, arrows, paintballs and pellets
- Motor vehicles, except for emergency response or municipal vehicles
- Dumping and/or littering
- Alcoholic beverages and glass containers
- Smoking
- Swimming except wading by the Tom Denney Nature Camp

### **Advance Permission Needed in Writing from the Bolton Conservation Commission for the following:**

- Camping
- Fires
- Memorials or Displays
- Building new trails, extensions and modifications to existing trails
- Cutting removing or damaging vegetation, except for the control of invasive species
- Collecting dead or downed wood, rocks or wildlife.

Any activities or uses not set forth here require the prior written permission of the Bolton Conservation Commission.

Adopted 12/21/2010 Filed with the Bolton Town Clerk 1/2/2011

Bolton Conservation Commission  
663 Main Street, Bolton, MA 01740  
978 779 3304  
concom@townofbolton.com

