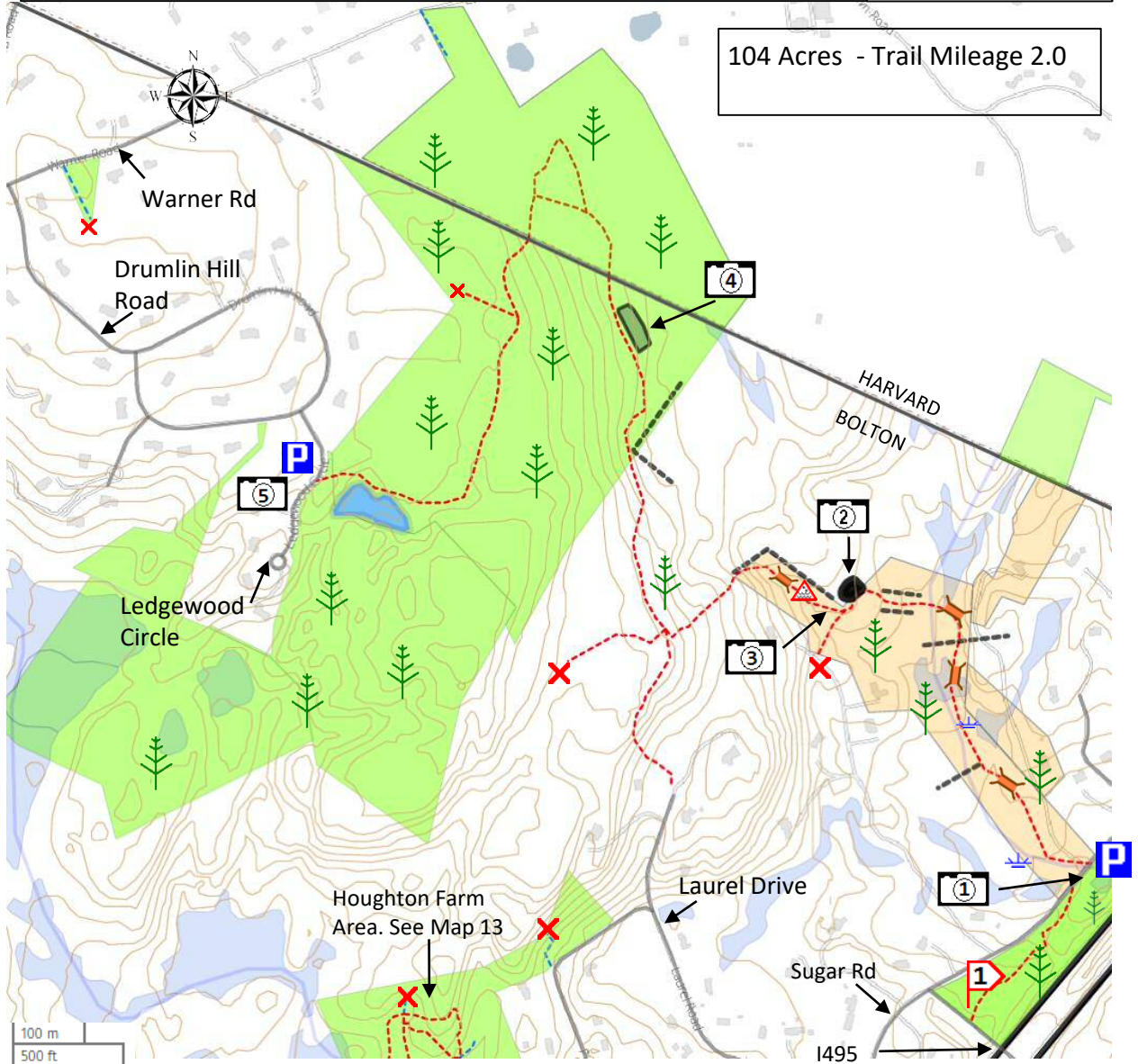


104 Acres - Trail Mileage 2.0

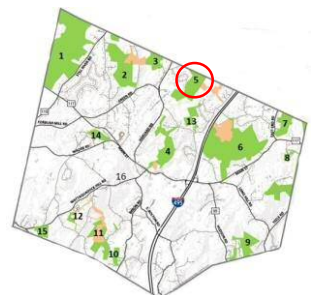


This map is based on OSM data © OpenStreetMap contributors. For more information see www.openstreetmap.org/copyright

Legend:

- | | | |
|---|-----------------|---|
| Private land or easement. Please stay on trail | Primary trail | Parking |
| Agricultural Preservation Restriction. Please stay on trail | Secondary trail | Photo location |
| Town or Conservation Land. Please obey trail restrictions. | No access | Point of interest mentioned in the text |
| Lake or Pond. Permanent water. | Stone wall | Trail susceptible to flooding |
| Wetlands | Marsh or swamp | Bridge |
| | Wooded area | Kiosk |
| | Dam | |


Contour lines are at intervals of 20 feet



Northwoods Area:

There are three parcels of land included here under the general name “Northwoods”. The Northwoods space itself is associated with a FOSPRD development. The Sochalski Conservation area was purchased by the town and The Levinson area which stretches in to Harvard was a gift to Bolton. All the trail easements are owned by Bolton Conservation Trust. There are several “Private Trails” to nearby properties and these should be avoided.

The Zink Trail Easement: This easement was granted to Bolton Conservation Trust as part of the residential development of the Zink property. The path climbs gently northwards from Corn Road and follows a brook which is crossed eventually. There can be some wet patches in the trail and the bridge over the brook can be tricky for some people. After passing a large boulder the trail turns right just before a makeshift bench. It then continues uphill to connect to the trails in the Northwoods area and conservation land in Harvard.

The Zink Sawmill land: This is town-owned land and was once the location of a sawmill owned by the Zink family and there are still remnants of the industrial activity visible from the trail which is a useful connector from Sugar Road  to the parking area and the Zink Trail Easement on Corn Road.



Parking: GPS address: 41 Corn Road – space for one or two cars near to the trail head next to a driveway.

Drumlin Hill Road: A small number of cars can be parked on the left hand verge as the road drops down to the circle. The trail head is clearly marked.

Thoreau Walk

The whole route from Sugar Road to Drumlin Hill Road was included in the Bolton Section of the Thoreau walk from Walden Pond to Mt Wachusett as part of the Thoreau bicentennial celebrations in 2017.

Suggested walks:

There are few opportunities for loop walks here, but car spotting can provide some interesting opportunities.

Short: Follow the Zink Trail out to the makeshift bench after the big boulder, have a break and return to Corn Road.

Short: A walk from Drumlin Hill Road and explore the small loop on Levinson Land in Harvard.

Medium: Out and back from Drumlin Hill Road to the makeshift bench.

Long: Car Spot at the Corn Road and Drumlin Hill Road Parking areas and walk the full length between these points. Make it longer by an out and back along the Zink Sawmill Trail.


Very Long: Car spot and follow the 11-mile Across Bolton Trail from the Delaney Land in Stow to the Bolton Flats area. For more information about this contact the Bolton Trails Committee.

 Corn Rd Trail Head




 Big Rock

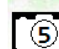


 Makeshift Bench



 Boulders



 Drumlin Hill Rd trail head



Bolton Conservation Land Rules and Regulations

The Bolton Conservation Commission welcomes responsible public use and enjoyment of land under its stewardship. Pursuant to Massachusetts General Laws chapter 40, section 8c, the Conservations Commission has adopted these rules and regulations to provide to provide a pleasant experience to users and in order to project in perpetuity the wildlife, aesthetic, ecological, environmental and conservation values of these properties, which include:

- Protection of surface and groundwater resources
- Protection of unfragmented forest habitat.
- Protection of wildlife habitat
- Protection of open space and the trails system

Dogs may be walked on conservation land as long as they are under the effective control of a person. People walking dogs shall remove feces from trails and all environmentally sensitive areas. Please keep dogs out of vernal pools during the breeding season for frogs and salamanders (generally mid-February through April). Do not let dogs chase or harass wildlife.

Prohibitions

- Hunting, trapping and discharging of firearms, arrows, paintballs and pellets
- Motor vehicles, except for emergency response or municipal vehicles
- Dumping and/or littering
- Alcoholic beverages and glass containers
- Smoking
- Swimming except wading by the Tom Denney Nature Camp

Advance Permission Needed in Writing from the Bolton Conservation Commission for the following:

- Camping
- Fires
- Memorials or Displays
- Building new trails, extensions and modifications to existing trails
- Cutting removing or damaging vegetation, except for the control of invasive species
- Collecting dead or downed wood, rocks or wildlife.

Any activities or uses not set forth here require the prior written permission of the Bolton Conservation Commission.

Adopted 12/21/2010 Filed with the Bolton Town Clerk 1/2/2011

Bolton Conservation Commission
663 Main Street, Bolton, MA 01740
978 779 3304
concom@townofbolton.com

