

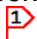
Legend:

- Private land or easement
Please stay on trail
 - Agricultural Preservation
Restriction.
Please stay on trail
 - Town or Conservation Land
Please obey trail restrictions
 - Lake or Pond
Permanent water
 - Wetlands
 - Primary trail
 - Secondary trail
 - No access
 - Stone wall
 - Marsh or Swamp
 - Wooded area
 - Dam
 - Parking
 - Photo location
 - Point of interest
mentioned in the text
 - Trail susceptible
to flooding
 - Bridge
 - Kiosk
- Contour lines at 20' intervals



This map is based on OSM data © OpenStreetMap contributors.
For more information see www.openstreetmap.org/copyright



Gould-White: This name has been used for convenience on a contiguous group of properties that offer many trails and plenty of scope for exploration. A number of vernal pools surrounded by hilly woodland and ledge outcrops lie in the centre of this area. Old trees grow side to side with young stands of sweet birch. A number of brooks cross the land and the sights and sounds of wildlife such as deer and woodpeckers are all present. There is an overlook above one of the pools and a group of rocks has settled into a formation known as “The Cave”. 

Gould: Purchased by the Town from H. Mitchell Gould in 1987.

White: This 18-acre property was a gift to the town by Harold and Betty White in 1993.

Wallie: The Town and Bolton Conservation Trust purchased this area from David Wallie in 1993.

Hapgood-Schechter Conservation Restriction: This is private property, but with a Conservation Restriction and a number of trail easements. It completes the contiguous area and provides a connection to West Berlin Road.

McGourty: A short trail leads across this stand-alone piece of land that was given to Bolton Conservation Trust by the McGourty family in 1994. The path follows a brook to end at private land with views of some significant rock outcrops.

Parking: The Intersection of Randall Road and Rocky Dundee Road. Also there is space for one car on the was side of Randall Road close to the Vinger Venable trail head.


Connections: From the Hapgood-Schechter Trail to the Philbin-Salmon Trail along West Berlin Rd. To the Fyfreshire Trail by following Sawyer Rd, turning left on to West Berlin Road and walking past the Schartner Farm.

To Vinger-Venable by a short walk along Randall Road from any of the trailheads on the East side of the area.


Suggested walks: *Short* - Start at the White Property sign on Randall Rd, follow the path to the junction on the cart track, turn right and return via the vernal pools and Basin Loop Trail to Randall Rd.

Longer - Start at the White Property sign on Randall Rd, follow the path to the junction on the cart track, turn left, then right along the Brendan Ridge Trail, make a right turn to visit the Overlook, continue to the Hapgood-Schechter Trail and back via the stove of young trees (sometimes called the “Filtered Forest”) and the Basin loop Trail.




 Hapgood-Schechter trailhead on West Berlin Rd.




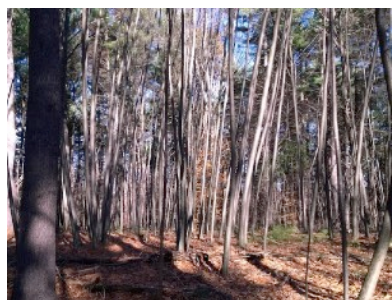
 Sawyer Rd trailhead.




 Crossing the brook on the White property.




 Frozen Vernal Pool from the Overlook.



 Young grove of trees.



 Trail towards the Birch Grove from the north.



Bolton Conservation Land Rules and Regulations

The Bolton Conservation Commission welcomes responsible public use and enjoyment of land under its stewardship. Pursuant to Massachusetts General Laws chapter 40, section 8c, the Conservations Commission has adopted these rules and regulations to provide to provide a pleasant experience to users and in order to project in perpetuity the wildlife, aesthetic, ecological, environmental and conservation values of these properties, which include:

- Protection of surface and groundwater resources
- Protection of unfragmented forest habitat.
- Protection of wildlife habitat
- Protection of open space and the trails system

Dogs may be walked on conservation land as long as they are under the effective control of a person. People walking dogs shall remove feces from trails and all environmentally sensitive areas. Please keep dogs out of vernal pools during the breeding season for frogs and salamanders (generally mid-February through April). Do not let dogs chase or harass wildlife.

Prohibitions

- Hunting, trapping and discharging of firearms, arrows, paintballs and pellets
- Motor vehicles, except for emergency response or municipal vehicles
- Dumping and/or littering
- Alcoholic beverages and glass containers
- Smoking
- Swimming except wading by the Tom Denney Nature Camp

Advance permission needed in writing from the Bolton Conservation Commission for the following:

- Camping
- Fires
- Memorials or Displays
- Building new trails, extensions and modifications to existing trails
- Cutting removing or damaging vegetation, except for the control of invasive species
- Collecting dead or downed wood, rocks or wildlife.

Any activities or uses not set forth here require the prior written permission of the Bolton Conservation Commission.

Adopted 12/21/2010 Filed with the Bolton Town Clerk 1/2/2011

Bolton Conservation Commission
663 Main Street, Bolton, MA 01740
978 779 3304
concom@townofbolton.com

