

38 Acres - Trail Mileage 1.84

Legend: This map is based on OSM data © OpenStreetMap contributors. For more information see www.openstreetmap.org/copyright

- | | | | |
|---|-----------------|---|--------------------------------|
| Private land or easement. Please stay on trail | Primary trail | Parking | Contour lines at 20' intervals |
| Agricultural Preservation Restriction. Please stay on trail | Secondary trail | Photo location | |
| Town or Conservation Land. Please obey trail restrictions. | No access | Point of interest mentioned in the text | |
| Lake or Pond. Permanent water. | Stone wall | Trail susceptible to flooding | |
| Wetlands | Marsh or swamp | Bridge | |
| | Wooded area | Kiosk | |
| | Dam | | |



Fyfeshire: This 31-acre Conservation Area was a gift to the Town of Bolton by Helen L Plummer. The name is derived from the county in Scotland where her ancestors (the Fyfes) originated. The area contains some beautiful trails and picturesque sitting areas, the restored dam of an old button mill and some pondside nature observation points. There is plenty of beaver activity and at various times of year the flora can be spectacular. There are several uncommon species such as white cedar, black gum and tupelo on the property. A new dam and bridge provide access to the southwestern side of the main pond. A bridge carries a trail over the marshy land on the northwestern side on a route that leads towards Clinton and avoids the traffic on the main road.

Haynes Wheeler: This 6.75 acre wooded area has a 0.25 mile trail from Sawyer Road to Wattaquaddock Hill Road. A few yards along the road towards Clinton there is a short connector that leads to the upper pond at Fyfeshire. The land was a gift to the Town by Levi Wheeler in 1970. Levi had lived at his grandparents home on Sawyer Road in what is now the Schultz Farm.

Parking: 500-530 Wattaquaddock Hill Road - space for several cars next to the Fyfeshire entrance gate.

There is sufficient space for one car on the right hand side of Sawyer Road south east a short distance from the junction with Wattaquaddock Hill Road.

Additional space for one or two cars is available on the old tarmac area on Wattaquaddock Hill Road near the junction with Sawyer Road.

Connections:

Haynes Wheeler Trail and the trails along the North of Wattaquaddock Pond can be used by pedestrians to avoid the traffic when walking down Wattaquaddock Hill Road.

Viewing:

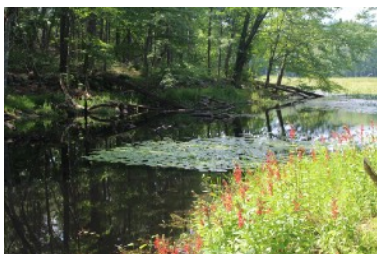
Trails along the side of Wattaquaddock Pond give some excellent opportunities for photography.

Suggested walks:

Short: a 300 yard circuit of the upper pond

Medium: Out and back along the various trails next to or near Wattaquaddock Pond

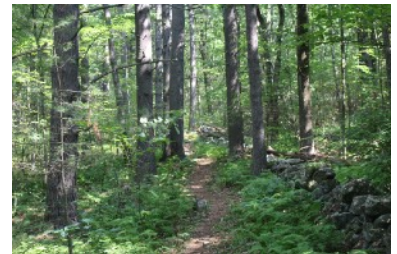
Long: a 2.5 mile loop from the Fyfeshire gate up to Peach Hill Road, turn left at Sawyer Road and return to the start along the Haynes Wheeler Trail



Cardinal flowers



Upper Pond Bench



Peach Hill Rd Trail



Trail Signs on Tree



Entrance Gateway



Peach Hill Rd Trail



Bolton Conservation Land Rules and Regulations

The Bolton Conservation Commission welcomes responsible public use and enjoyment of land under its stewardship. Pursuant to Massachusetts General Laws chapter 40, section 8c, the Conservation Commission has adopted these rules and regulations to provide to provide a pleasant experience to users and in order to protect in perpetuity the wildlife, aesthetic, ecological, environmental and conservation values of these properties, which include:

- Protection of surface and groundwater resources
- Protection of unfragmented forest habitat.
- Protection of wildlife habitat
- Protection of open space and the trails system

Prohibitions

- Hunting, trapping and discharging of firearms, arrows, paintballs and pellets
- Motor vehicles, except for emergency response or municipal vehicles
- Dumping and/or littering
- Alcoholic beverages and glass containers
- Smoking
- Swimming except wading by the Tom Denney Nature Camp

Advance Permission Needed in Writing from the Bolton Conservation Commission for the following:

- Camping
- Fires
- Memorials or Displays
- Building new trails, extensions and modifications to existing trails
- Cutting removing or damaging vegetation, except for the control of invasive species
- Collecting dead or downed wood, rocks or wildlife.

Any activities or uses not set forth here require the prior written permission of the Bolton Conservation Commission.

Adopted 12/21/2010 Filed with the Bolton Town Clerk 1/2/2011

Bolton Conservation Commission
663 Main Street, Bolton, MA 01740
978 779 3304
concom@townofbolton.com



Dogs must be under the direct control of an adult on Conservation Land.



Individuals walking dogs on Conservation Land shall remove all feces.



Please keep dogs out of vernal pools and wetland resource areas.



Do not let dogs or other individuals chase or harass wildlife.

