

**38 Acres - Trail Mileage 1.84**

**Legend:** This map is based on OSM data © OpenStreetMap contributors. For more information see [www.openstreetmap.org/copyright](http://www.openstreetmap.org/copyright)

- |   |                 |   |                                |
|---|-----------------|---|--------------------------------|
| Private land or easement. Please stay on trail              | Primary trail   | Parking                                 | Contour lines at 20' intervals |
| Agricultural Preservation Restriction. Please stay on trail | Secondary trail | Photo location                          |                                |
| Town or Conservation Land. Please obey trail restrictions.  | No access       | Point of interest mentioned in the text |                                |
| Lake or Pond. Permanent water.                              | Stone wall      | Trail susceptible to flooding           |                                |
| Wetlands  | Marsh or swamp  | Bridge                                  |                                |
|   | Wooded area     | Kiosk                                   |                                |
|   | Dam             |   |                                |



**Fyfeshire:** This 31-acre conservation area was a gift to the Town of Bolton by Helen L. Plummer. The name is derived from the county in Scotland where her ancestors (the Fyfes) originated. The area contains some beautiful trails and picturesque sitting areas, the restored dam of an old button mill **1**, and some pond-side nature observation points. There is plenty of beaver activity, and at various times of year the flora can be spectacular. There are several uncommon species such as white cedar, black gum and tupelo on the property. A new dam and bridge provide access to the southwestern side of the main pond. On the northwest side another bridge carries a trail over the marshy land on a route that leads towards Clinton and avoids the traffic on Wattaquaddock Hill Rd.

**Haynes-Wheeler:** This 6.75 acre wooded area has a 0.25 mile trail from Sawyer Rd. to Wattaquaddock Hill Rd. It was a gift to the Town by Levi Wheeler in 1970. Levi had lived at his grandparent's home on Sawyer Rd. on what is now the Schultz Farm. A few yards along the road towards Clinton there is a connector **2** leading to Fyfeshire upper pond.

**Parking:**

- *Wattaquaddock Hill Rd.*, at the Fyfeshire entrance gate. 6 parallel parked cars. 42.418278, -71.648972
- *Sawyer Rd.*, southern side, on the edge of the woods; park off the roadway on the dirt and scrub surface, near Wattaquaddock Hill Rd. 2 cars. 42.420780, -71.643226
- *Wattaquaddock Hill Rd/Sawyer Rd. crossroads.*, 1 car on the old tarmac area. 42.421095, -71.643528

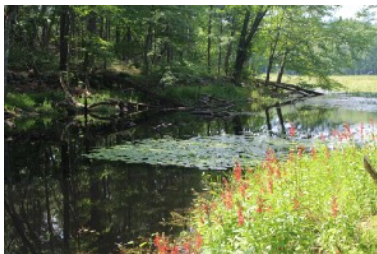
**Connections:** *Haynes-Wheeler Trail* and the trails along the north of Wattaquaddock Pond can be used by pedestrians to avoid the traffic when walking down Wattaquaddock Hill Rd.

*The Mountain Laurel Trail* leads South to Lancaster Rd. in Berlin.

**Suggested walks:** *Short:* a 300 yard circuit of the upper pond.

*Medium:* Out and back along the various trails next to or near Wattaquaddock Pond.

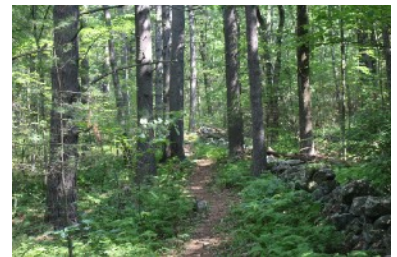
*Long:* a 2.5 mile loop from the Fyfeshire gate up to Peach Hill Rd., turn left at Sawyer Rd. (off the map) and return to the start along the Haynes-Wheeler Trail.



**1** Cardinal flowers



**2** Upper Pond Bench



**3** Peach Hill Rd Trail



**4** Trail Signs on Tree



**5** Entrance Gateway



**6** Peach Hill Rd Trail



## Bolton Conservation Land Rules and Regulations.

The areas of Bolton Flats (Map 1) and Delaney Wildlife Management Areas (Map 7) fall under the Massachusetts Division of Wildlife regulations. Additional details can be found at: <https://www.mass.gov/orgs/division-of-fisheries-and-wildlife>.

The Bolton Conservation Commission welcomes responsible public use and enjoyment of land under its stewardship. Pursuant to Massachusetts General Laws Chapter 40, Section 8c, the Conservation Commission has adopted these rules and regulations to protect:

- Surface and groundwater resources
- Unfragmented forest habitat
- Wildlife habitat
- Open space and the trails system.

### Prohibitions

- Hunting, trapping and discharging of firearms, arrows, paintballs, and pellets
- Motor vehicles, except for emergency response or municipal vehicles
- Dumping and/or littering
- Alcoholic beverages and glass containers
- Smoking
- Swimming except by attendees at the Tom Denney Nature Camp.

**Advance permission needed in writing from the Bolton Conservation Commission for the following:**

- Camping
- Fires
- Memorials or Displays
- Building new trails, extensions, and modifications to existing trails
- Cutting, removing, or damaging vegetation, except for the control of invasive species
- Collecting dead or downed wood, rocks or wildlife.

Any activities or uses not set forth here require the prior written permission of the Bolton Conservation Commission.

Adopted 12/21/2010

Filed with the Bolton Town Clerk 1/2/2011

Bolton Conservation Commission  
663 Main Street, Bolton, MA 01740  
978 779 3304

[concom@townofbolton.com](mailto:concom@townofbolton.com)



Dogs must be under the direct control of an adult on conservation land.



Individuals walking dogs on conservation land must remove all feces.



Please keep dogs out of vernal pools and wetland resource areas.



Do not let dogs or individuals chase or harass wildlife.

