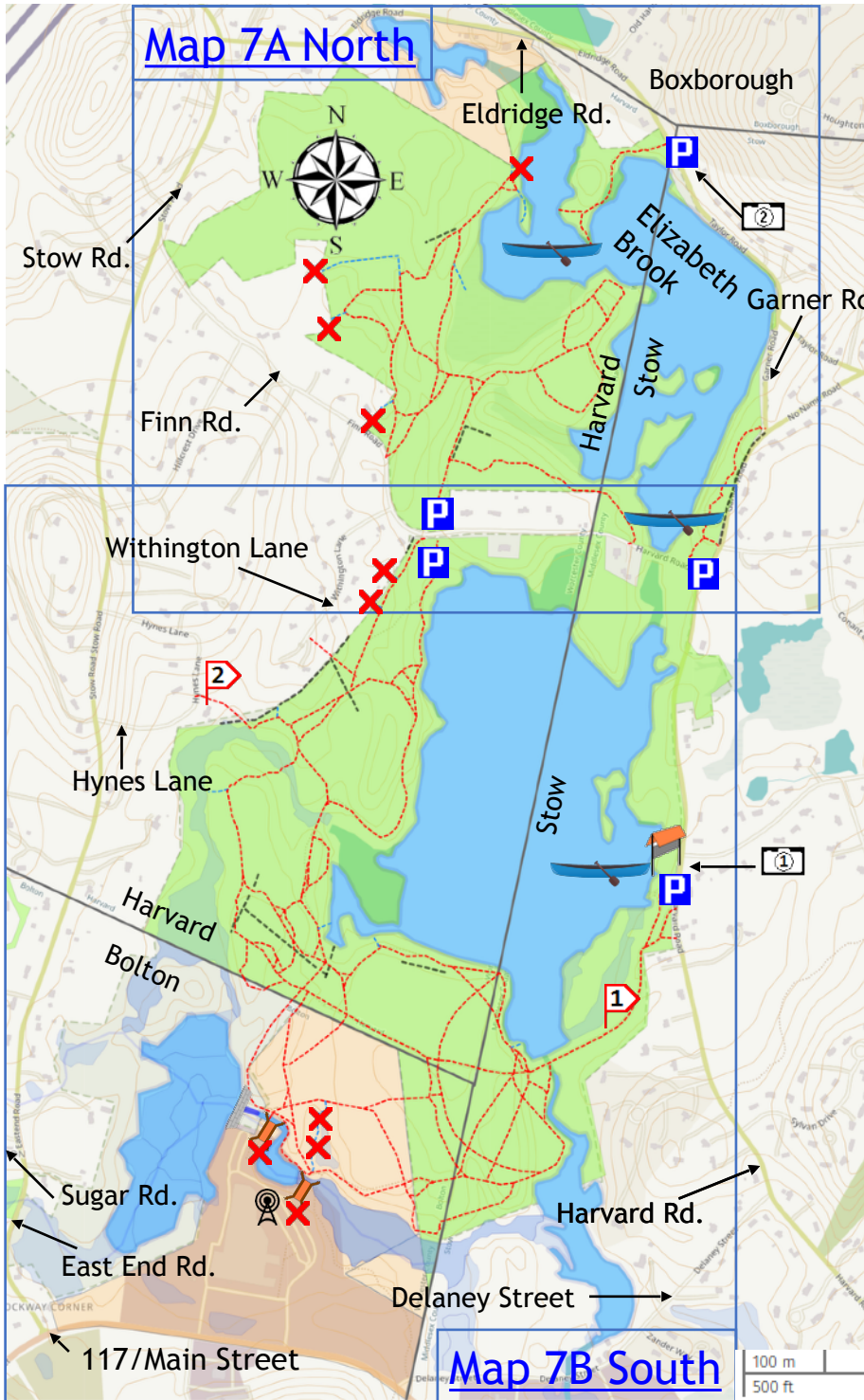


Click on a map title to jump to the detail.



Legend:

- Private land or easement
Please stay on trail
- Town, State or Conservation Trust Land. Please obey trail restrictions.
- Lake or Pond
Permanent water
- Wetlands
- Primary trail
- Secondary trail
- No access
- Stone wall
- Parking
- Bridge
- Dam
- Kiosk
- Communications Tower
- Car top boat launch area
- Contour lines at 20' intervals

This map is based on OSM data © OpenStreetMap contributors. For more information see www.openstreetmap.org/ copyright

**580 Acres -
Trail Mileage 10.64**



Regulations:

This area is under the jurisdiction of the Massachusetts Division of Fisheries and Wildlife. <https://www.mass.gov/orgs/division-of-fisheries-and-wildlife>
Regulations and hunting schedules are posted at the trailheads and parking lots. Check the hunting schedules before entering this area.



Delaney Flood Control Project: It's been predicted that in the event of a 100-year storm, the Assabet River could increase in depth by 12 inches if the waters feeding the Elizabeth Brook are not held back. The Delaney Flood Control Project, including the 22 foot earthen Campbell Dam ¹ was established in 1968 by the US Soil Conservation Service. It was one of a number of such projects in the region that were prompted by a series of Atlantic hurricanes in the 1950s. Other nearby examples of flood control projects are in Westboro and Marlboro.

Elizabeth Brook: This brook originates in Harvard ([Map 7A](#)) and retains this name until it flows east to Fletchers Pond in Stow (not on the map) where it changes to Assabet Brook. It joins the Assabet River just before it crosses the Stow-Maynard boundary.

Delaney Wildlife Management Area: In 1962 it was decided to combine the purposes of flood and wetlands control with wildlife management. The Delaney area straddles Bolton, Harvard, and Stow town lines with 72 acres of the State-owned land in Bolton. Although the Bolton section is bounded on the west by East End Rd., the land at this point is wet and cannot be crossed. Trail access on foot from Bolton is practical by using the Hynes Lane ² connection in Harvard, or by driving to one of the marked parking lots in Harvard or Stow.

Activities: The ponds and trails offer biking, horseback riding, canoeing, fishing, and wildlife-viewing opportunities. The trails lead through open fields, forest, and marsh. They offer pleasant and varied walking without strenuous hill climbing. This is an excellent place for birdwatching, and the Massachusetts Audubon Society lists it as an important bird area. The main ponds provide habitat for otters, fishes, and many types of bird species. Ospreys are frequently sighted hunting fish in late summer and fall. In Delaney South ([Map 7B](#)) there are some old horse jumps that have been used by equestrians in the past.

Parking: There are five parking areas. They are explained in detail on the [Map 7A](#) and [Map 7B](#) maps.

Car Top Boat launch: Available for both the Delaney North ([Map 7A](#)) and South ([Map 7B](#)) areas.

Connections: The Bolton Loop Trail starts at the Harvard Rd. parking area and boat launch. The route leads from the Delaney South area via the Hynes Lane ² exit to the Harris Farm trailhead of the Rattlesnake area ([Map 6](#)) via East End and Sugar Roads.

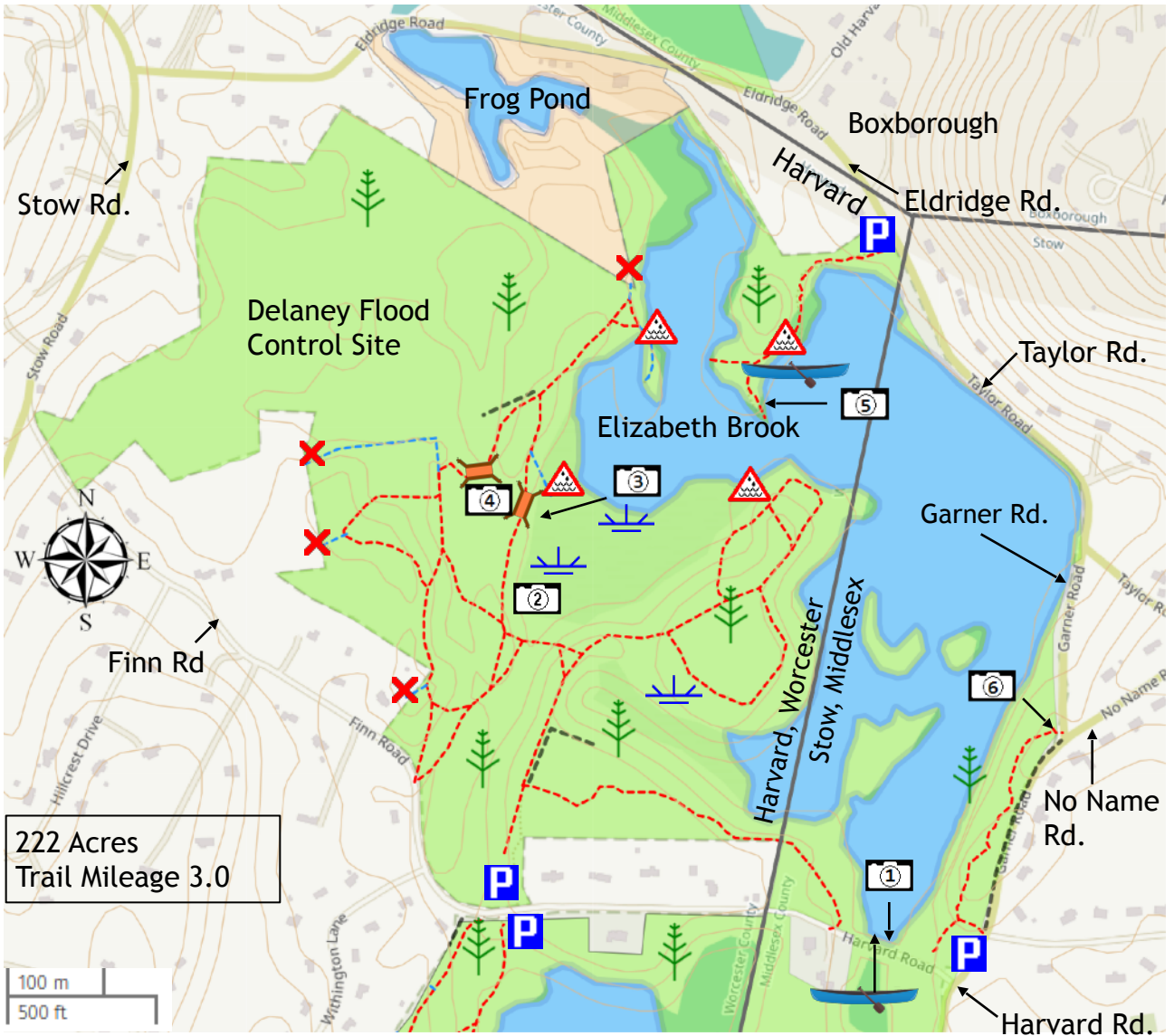


The Harvard Rd. parking lot and car top boat launch.



The Eldridge Rd. parking lot. A short portage leads to canoe/kayak boat launch area.





This map is based on OSM data © OpenStreetMap contributors. For more information see www.openstreetmap.org/copyright

Contour lines at 20' intervals

Legend:

- | | | | |
|---|-----------------|---|-------------------------------|
| Private land or easement. Please stay on trail | Primary trail | Point of interest mentioned in the text | Bridge |
| Town, State or Conservation Trust Land. Please obey trail restrictions. | Secondary trail | Photo location | Car top boat launch area |
| Lake or Pond. Permanent water. | No access | Marsh or swamp | Parking |
| Swamp, wetlands or area subject to flooding. | Stone wall | Wooded area | Trail susceptible to flooding |





① At the Garner Rd. boat launch



② Woodland path



③ Looking towards Elizabeth Brook



④ Stream flowing into Elizabeth Brook

Delaney, north of Finn Rd. in Harvard and Stow:
This 222 acre conservation area has over 3 miles of trails most of which are in the wooded area that can be accessed from Finn Rd. Side paths lead to excellent bird watching places and quiet spots for enjoying nature. There are two other trails. One is accessed from Eldridge Rd. in Harvard; it leads along a peninsula into a wide section of Elizabeth Brook. This is a good spot for bird watching and can be used for launching car-top boats. The second starts from a launch area near the intersection of Harvard Rd. and Garner Rd. in Stow. This short trail meanders through the woods and parallels Garner Rd. to the intersection with Noname Rd.

Parking:

- *Finn Rd.*, Harvard (either side of the Rd.).
42.458333, -71.549861
- *Eldridge Rd.*, Harvard (car-top boat launch after portage).
42.466139, -71.543694
- *Garner Rd. and Harvard Rd. junction*, Stow (car-top boat launch).
42.457333, -71.542944

Suggested walks: The terrain is generally rolling with a few small hills. Many options are available for short to medium length walks by just following the network of paths and enjoying the views of the ponds, vegetation, bird life, and the small streams that flow in to the area. For a longer walk, a tour of the Delaney North can be combined with a tour of Delaney South via one of the trailheads on Finn Rd.

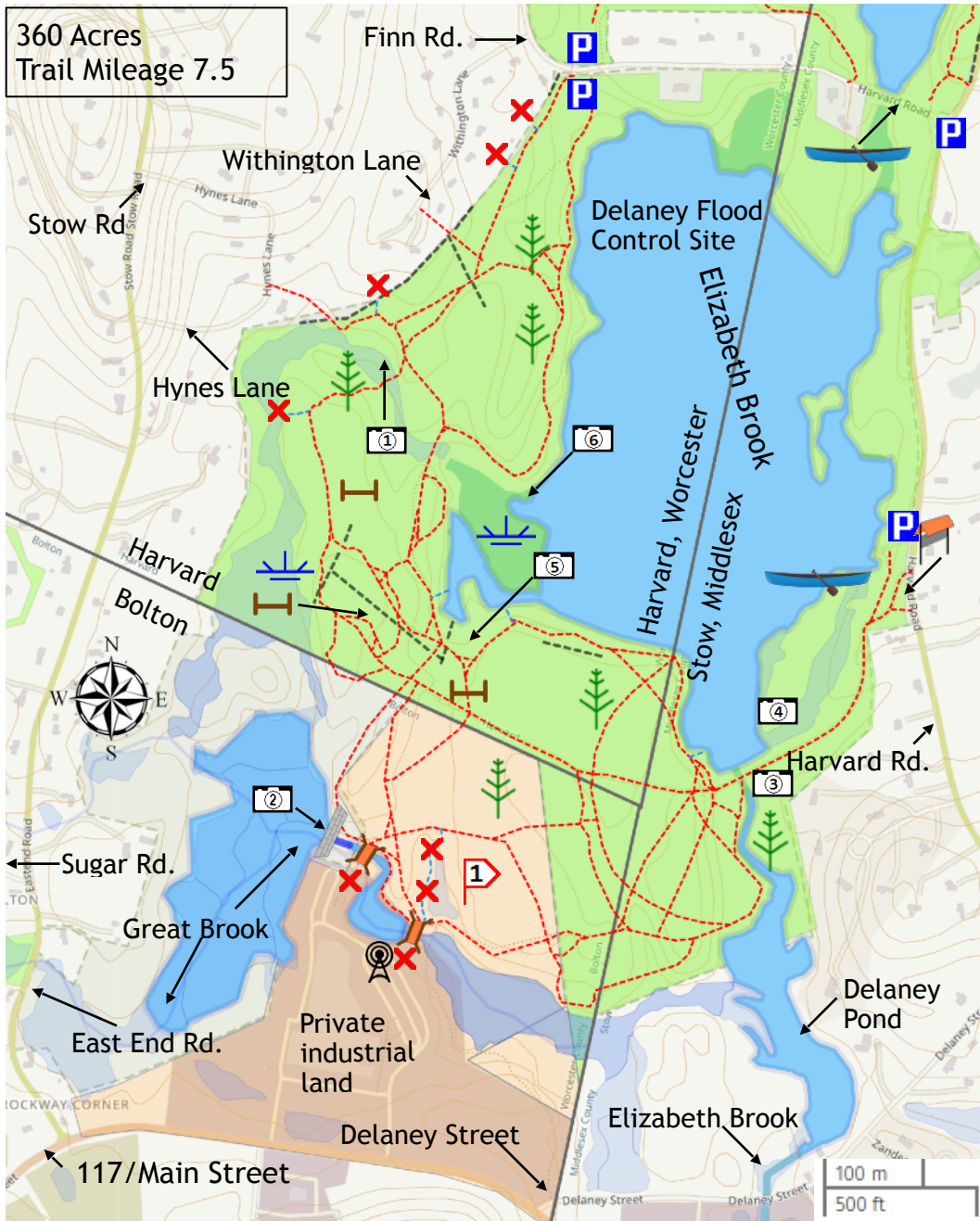


⑤ At the end of the northern peninsula



⑥ Trail head to the Garner Rd. parking lot





Contour lines at 20' intervals

This map is based on OSM data © OpenStreetMap contributors. For more information see www.openstreetmap.org/copyright

Legend:

- | | | | | |
|---|--|-----------------|---|-----------------|
| Private land or easement. Please stay on trail | Lake or Pond. Permanent water. | Primary trail | Parking | Kiosk |
| Town, State or Conservation Trust Land. Please obey trail restrictions. | Swamp, wetlands or area subject to flooding. | Secondary trail | Photo location | Bridge |
| Wooded area | Marsh or swamp | No access | Point of interest mentioned in the text | Horse Jump area |
| | | Stone wall | Car top boat launch area | Tower |
| | | Dam | | |



Delaney south of Finn Road in Harvard and Stow: There are almost 7.5 miles of trails in this area of approximately 360 acres. The terrain is mostly flat with a small number of gently rolling areas. It is very varied with streams, dams, good sized ponds, woods and places for equestrians to test their skills with horse jumping. Canoeists and kayakers have plenty of space to paddle and observe the land and bird life from the water.



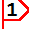
① Horse jump



② Rustic bridge and pond on Great Brook

Parking:

- *Finn Rd.*, Harvard (either side of the Rd.).
42.458333, -71.549861
- *Harvard Rd.*, Stow (car-top Boat launch).
42.450917, -71.543417

Suggested walks: All routes can be made as short or long as you like, but mostly you will return to your vehicle via the route you entered. The network of trails at the southern end  offer very different views to those closer to the main ponds.



③ Delaney Pond



④ Delaney flood Control Site



⑤ Rock field at the spillway



⑥ Swans enjoying a mild Winter day

