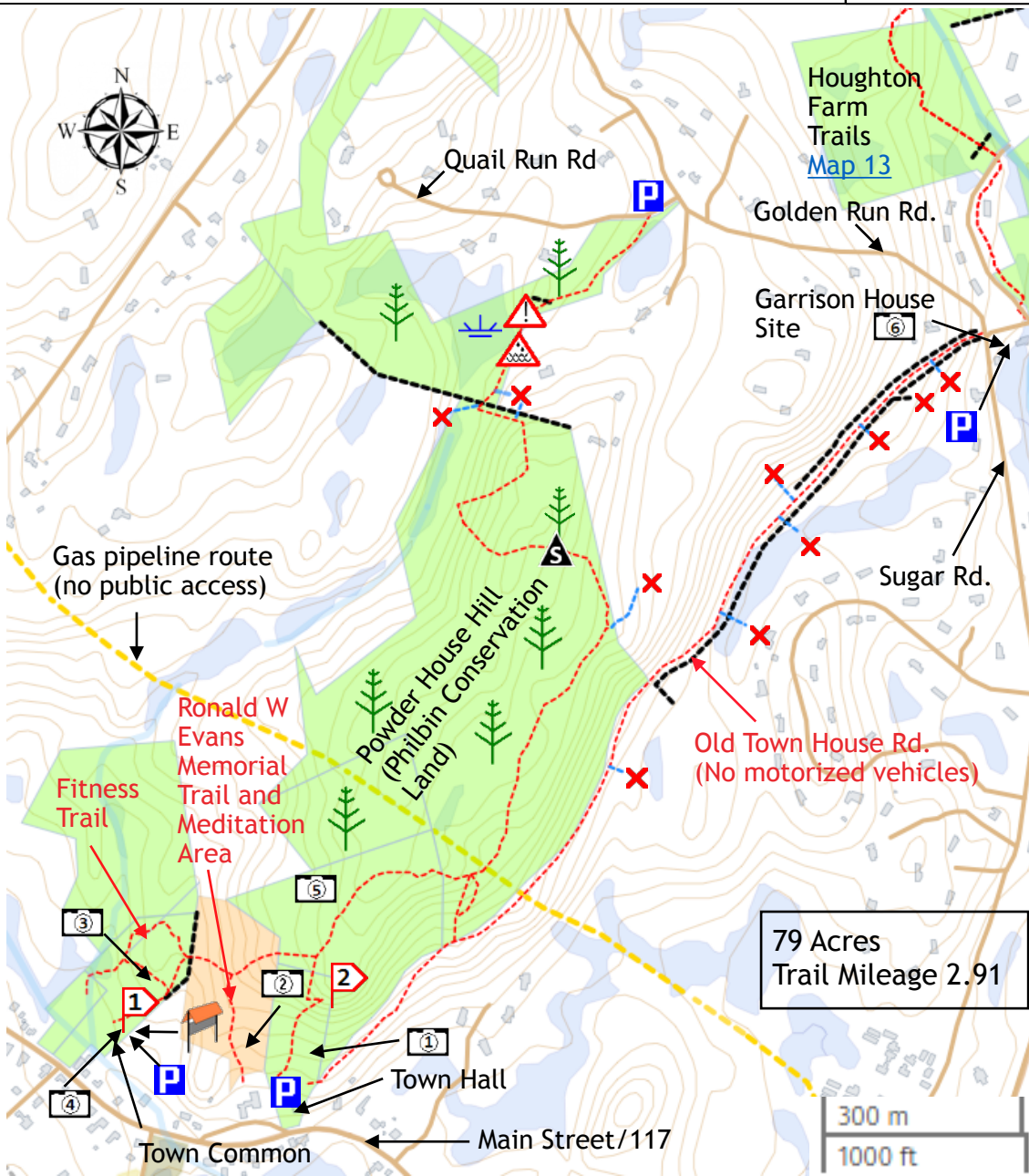


# Powder House Hill

Old Town House Rd,  
Town Common and Evans areas

# Map 4

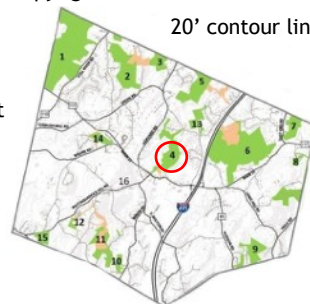


## Legend:

- Town or Conservation Land. Please obey trail restrictions.
- Lake or Pond. Permanent water.
- Swamp, wetlands or area subject to flooding.
- Primary trail
- Secondary trail
- Route of Gas Pipeline
- X No access
- Stone wall
- |\_| Marsh or swamp
- | Wooded area
- S High Point on trails
- K Kiosk
- 2 Photo location
- 3 Point of interest mentioned in the text
- ▲ Trail susceptible to flooding
- ! Use Caution
- P Parking

Map created by Bolton Trails Committee.  
Copyright © Bolton Conservation Trust 2025

20' contour line intervals




Click for  
GPS  
in  
KMZ  
format



## Parking:

- *Behind the Town Hall* (663 Main Street). 2 cars. 42.433417, -71.605139
- *The Town Common* (715 Main Street). 42.434139, -71.609722
- *The Garrison House*. 1 car. 42.444417, -71.591806
- *Quail Run Rd.*: 2 cars parked on the shoulder. 42.446083, -71.598139

**Powder House** : Built in 1811. Commonwealth of Massachusetts regulations prohibited towns from storing ammunition and powder at a Meeting House. A sign explains the history.


**Old Town House Rd.**: Officially laid out in 1764 as a short connection to the north of Bolton, probably used many years before.

**First Parish Church**: Founded 1741. Since 1931 has brought together different traditions.

Affiliations: Unitarian Universalist Association, American Baptist Churches, and United Church of Christ. The building dates from 1928; the second structure burned in 1926.

## Suggested walks:

*Several lengths*: Start at the Town Hall and ascend to the Powder House by the direct route, return by any of the trails. This is a rewarding area and exploration can involve a long and rolling walk (2+ miles) over the Philbin Land to Quail Run Rd., returning by the Old Town House Rd.

*Short and gentle ascent to the Powder House*: Take the Ronald W. Evans Trail from the Church parking lot. Take a break at the Meditation Area to read, ponder, watch wildlife, or whatever appeals to you. Return by any route, possibly including a stop at the Town Common where you can try the outdoor musical instruments. 

*Fitness Trail*: Ten fitness stations are along this route which starts at the Town Common.

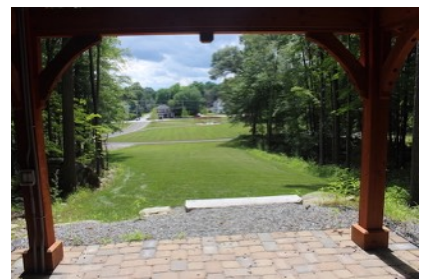
**Connections**: The Houghton Farm Area ([Map 13](#)) from the end of the Old Town Rd.



 Powder House



 Meditation Area



 Town Common




 Fitness Trail



 On Powder House Hill



 Garrison House



## Bolton Conservation Land Rules and Regulations

The Bolton Conservation Commission welcomes responsible public use and enjoyment of land under its stewardship. Pursuant to Massachusetts General Laws chapter 40, section 8c, the Conservation Commission has adopted these rules and regulations to provide to provide a pleasant experience to users and in order to protect in perpetuity the wildlife, aesthetic, ecological, environmental and conservation values of these properties, which include:

- Protection of surface and groundwater resources
- Protection of unfragmented forest habitat.
- Protection of wildlife habitat
- Protection of open space and the trails system

### Prohibitions

- Hunting, trapping and discharging of firearms, arrows, paintballs and pellets
- Motor vehicles, except for emergency response or municipal vehicles
- Dumping and/or littering
- Alcoholic beverages and glass containers
- Smoking
- Swimming except wading by the Tom Denney Nature Camp

### Advance Permission Needed in Writing from the Bolton Conservation Commission for the following:

- Camping
- Fires
- Memorials or Displays
- Building new trails, extensions and modifications to existing trails
- Cutting removing or damaging vegetation, except for the control of invasive species
- Collecting dead or downed wood, rocks or wildlife.

Any activities or uses not set forth here require the prior written permission of the Bolton Conservation Commission.

Adopted 12/21/2010 Filed with the Bolton Town Clerk 1/2/2011

Bolton Conservation Commission  
663 Main Street, Bolton, MA 01740  
978 779 3304  
concom@townofbolton.com



Dogs must be under the direct control of an adult on Conservation Land.



Individuals walking dogs on Conservation Land shall remove all feces.



Please keep dogs out of vernal pools and wetland resource areas.



Do not let dogs or other individuals chase or harass wildlife.

